

Flow Troubleshooting

Portable Meter Measures Flow from Outside a Pipe

*Portable Doppler
Flow Meter*

Greyline PDFM-IV

Displays, Datalogs
Transmits and Totalizes
Flow in Closed Pipes

Simple 3-key Calibration
50,000 point Data Logger
4-20mA Output
10-Digit Totalizer
AC/DC Operation
Built-in Rechargeable Battery

New!



Fast, Easy Flow Measurements with Non-Contacting Strap-on Sensor

Non-Contacting Sensor

Use a Greyline PDFM-IV Portable Doppler Flow Meter to monitor and balance flow, or to troubleshoot flow problems in closed pipes. It is ideal to evaluate performance of in-line flow meters and can be installed, calibrated and started-up in minutes. Use it for projects where a permanent flowmeter is not required or to temporarily replace installed flow transmitters.

Simple Keypad Operating System

The PDFM-IV ultrasonic sensor is strapped on the outside of a pipe. An acoustic pulse is reflected back to the sensor from particles or gases in the flowing liquid. The flow rate of any fluid can be measured as long as it contains air bubbles or solids. It is ideal for wastewater, slurries, sludge, and most chemicals, acids, caustics, and lubrication fluids.



Nixon Flowmeters Limited,
Badminton Close, Naunton Lane,
Leckhampton,
Cheltenham,
Gloucestershire GL53 7BX,
England

Tel: +44 (0)1242 243006
Fax: +44 (0)1242 222487

Email: flowmeters@compuserve.com

Solve Flow Problems!

- ◆ Troubleshoot and Balance Flow
- ◆ Check Performance of Pumps or other Flow Meters
- ◆ Use as a stand-by Flow Indicating Transmitter



Quick, Easy Flow Measurements from Outside a Pipe

Each Greyline PDFM-IV comes complete with a padded Cordura™ carrying case, strap-on sensor and stainless steel mounting kit. Move it from pipe to pipe for quick readings, or you can leave the flow meter transmitting/data logging at one location.

Power for the Whole Day

With its built-in rechargeable battery, you can operate the PDFM-IV all day on a single charge - even using the 4-20mA and RS-232 outputs. An indicating light shows low battery condition. Plug into an AC outlet (120 or 220VAC, 50/60Hz), and recharge fully in just 5 to 6 hours. You can continue to use the PDFM-IV while recharging.

Simple start-up and Calibration

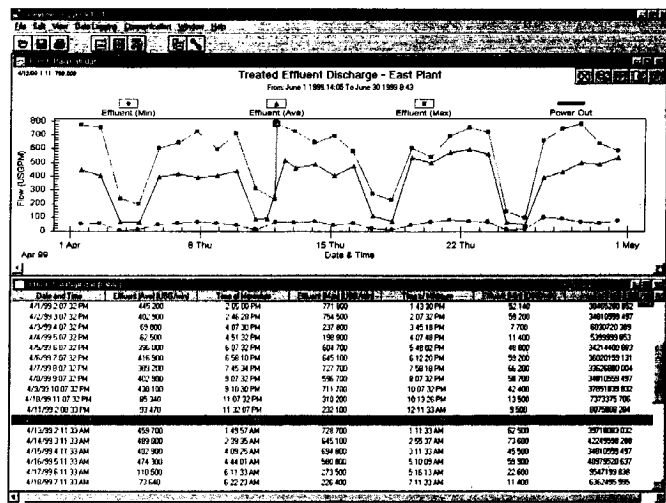
Sensor mounting and a full calibration can be done in just a few minutes. It is fast and easy! Put "coupling compound" (supplied) on the sensor face, then tape or clamp the sensor to any pipe over 1" (25 mm) I.D. Use the PDFM-IV 3-key calibration system to enter pipe diameter and to select your choice of engineering units (gallons, litres etc.) The PDFM-IV will immediately begin to display, transmit and totalize.

Built-in 50,000 point Data Logger

Set up the PDFM-IV's data logger to store time and date-stamped flow values from 1 second to 30 minute intervals. Or use the convenient 'Flow Report' format where total, minimum, maximum and average flow rates are stored in your choice of hourly or daily summaries. Transfer flow logs to your PC or laptop through the PDFM-IV's RS232 output (cable included).

FREE 'Greyline Logger' software for Windows™

It's included with each PDFM-IV. Greyline Logger software supports data retrieval by dial-up connection through modems and phone lines, or by direct connection to the RS232 output. This powerful software displays data in both graph and table formats and exports to graphic or text file formats for use in other programs. Runs on any PC with Windows™ 95, 98 or NT.



Includes 4-20mA Output

Transmit flow to chart recorders, controllers and remote displays. From the PDFM-IV keypad you can even offset the analog output to transmit over a specific range of flow rates.

Smart Operating System with Advanced Noise Rejection



The PDFM-IV portable flowmeter includes special microprocessor software to automatically reject transient spikes in flow readings from interference, noise and turbulence. That means better performance and accuracy even in tough operating conditions. From the PDFM-IV keypad you can adjust damping and sensitivity for best performance in each application.

No Calculations - No Programming Codes

Select your choice of display units: the PDFM-IV will display and totalize flow volume in gallons, litres, cubic feet or cubic meters. If you change from one measurement system to another, the PDFM-IV will automatically and instantly calculate and convert the flow display and totalizer. You can calibrate to any pipe size using the keypad to enter inside diameter.